

Let us Show You!

# Child Care / Child-Raising Support that Suits You



What do you do in situations like this?

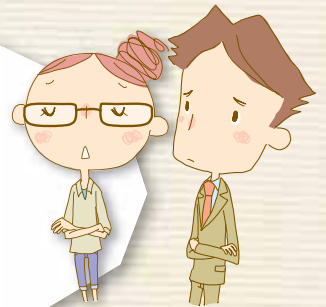
What do I do when I have something to do and I want someone to take care of my child?



I want to send him to kindergarten. Would it be practical for me to work?



I want to work. What are my child care options?



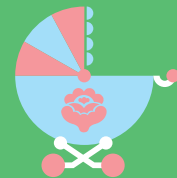
Non-daycare options



Options while your child is in kindergarten



Should I send my child to daycare?



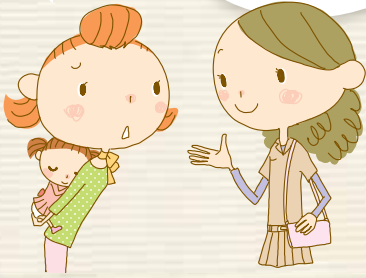


## Non-daycare options

### Temporary daycare at a licensed daycare facility.

I'd like to gradually start working. Can I leave my child for 2 or 3 days a week?

Why don't you use temporary daycare? I heard that if you can leave your child on short notice and also when you just need a break.



With this system, if a guardian has 3 or few days of part-time work a week, or has problem with child care in the house due to sudden illness or a family function, or if the guardian wants to take a break, he or she can drop off the child.

### Nagoya Nobinobi Child-Raising Support

I'm so busy with work lately. I want to have someone pick up my child, but there's no one nearby that we can ask.



This is a system in which people who want help with child-raising (requesting members) and people who want to help with child-raising (providing members) help each other.  
\*Also available for children who go to daycare and kindergarten

### Daycare for sick and recovering children

My child has a slight fever, but I can't take time off work! What do I do?

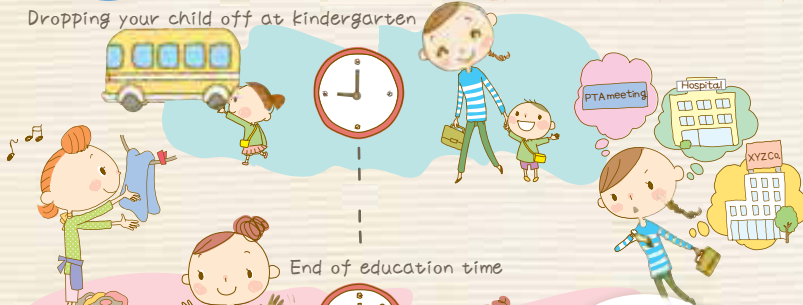


This is temporary child care in a facility for sick and recovering children for children up to Third Grade who are sick or who are recovering from illness and for whom group daycare and home care is not practical due to the work requirements of the guardian.



## Options while your child is in kindergarten

Dropping your child off at kindergarten



End of education time



Daycare



### Kindergarten child care

In kindergarten, children play and interact with their friends and teachers in a fun environment, which promotes their healthy growth and development and prepares them for life and learning in elementary school and beyond. Many kindergartens in Nagoya offer child care after educational hours to support child-raising. This child care takes many forms based on the characteristics of the kindergarten.

Starting in 2012, Many private kindergartens have expanded into "model projects" with services to include daycare for children from two-parent families, who cannot be cared for at home because of the long working hours of their parents, and who need child care during summers. Please consult with the individual kindergarten for their respective conditions.





## Should I send my child to daycare?

Each daycare has different hours of operations, so we'll have to choose the right one depending on our work situation.

I want to start working next year. Which daycare is right for me?

There are even home-based daycares that take children up to 2 years old.



### Licensed daycares

This is a facility that conforms to the Child Welfare Law where a guardian who cannot take care of their child at home because of work, illness, childbirth etc., he/she can place their child. Typically, their hours are from about 7:30AM to 6PM, but some facilities have extended hours. \*Any extended hours depend on the daycare.

### Home-based daycares

These are daycares in which home-based child-care workers (daycare moms) care for the children who are 0 to 2 years of age. Guardians apply to the local ward office, and pay a usage fee as required by the daycare based on their income.

Are there daycares that take children on Sundays?

We both work Sundays...

It's almost maternity leave... I'm not sure if I can put my child in daycare when my child-raising leave ends.



### Daycares that take children on weekends and holidays

For people who work on Sundays and holidays, there are daycares that care for children on these days.

### Daycares where you can reserve a place for after maternity and child-raising leave

At some daycares accept, it is possible to reserve a place for your child after your maternity leave or child-raising leave.

## Should I send my child to daycare?

Notification of the Equal Employment, Children and Families Bureau, Ministry of Health and Welfare, 2000

1. Collect information
2. Get a tour of the facility
3. Don't make a decision only based on what you see
4. Look inside the rooms of the facility
5. Observe the children at the facility
6. Observe the workers
7. Observe the facility
8. Ask about their philosophy and policies regarding childcare
9. Check up on the facility even after your child starts going there
10. Be forthright if you're dissatisfied or have any questions

### Non-licensed daycare facilities

Some daycare facilities have not been licensed by Nagoya City. Some of these non-licensed daycare facilities have satisfied a certain part of the standards and have been given certificates.



I see ♪

## Summary

These are your child care and child-raising options!



	Ages (as of 4/1)						Hours (Note 1)												
	0	1	2	3	4	5	7	8	9	10	11	12	13	14	15	16	17	18	19
Temporary daycare	○	○	○	○	○	○													
Nagoya Nobinobi Child-raising Support	57 days of age to Sixth Grade						Required time												
Daycare for sick and recovering children	6 months of age to Third Grade																		
Kindergarten				○	○	○	Daycare	Educational time						Daycare					
Licensed daycares	○	○	○	○	○	○													Extended daycare
Home-based daycare	○	○	○																

Note 1: The hours are approximate and depend on the facility. The hours will also differ on Saturdays.  
 Note 2: Some kindergartens accept children who are three years of age.



## Contact



### Using Daycares

Please contact the Children's Section of the Ward Office and the Welfare Section of the Sub-Office.

Chikusa Ward	753-1841	Nakagawa Ward	363-4412
Higashi Ward	934-1192	Tomida Sub-office	301-8361
Kita Ward	917-6519	Minato Ward	654-9712
Kusunoki Sub-office	901-2264	Nanyo Sub-office	301-8342
Nishi Ward	523-4591	Minami Ward	823-9396
Yamada Sub-office	501-4971	Moriyama Ward	796-4601
Nakamura Ward	453-5413	Sidami Sub-office	736-2187
Naka Ward	265-2317	Midori Ward	625-3951
Showa Ward	735-3902	Tokushige Sub-office	875-2213
Mizuho Ward	852-9393	Meito Ward	778-3095
Atsuta Ward	683-9911	Tenpaku Ward	807-3893

### Nagoya Nobinobi Child-raising Support

- Child-raising Support Section, Child-raising Support Division, Nagoya City Children and Youth Bureau  
TEL 972-3083
- Bureau Head Office  
(in the Nagoya Children/Child-raising Support Center)  
TEL 262-2373

### Daycare at kindergartens

- Daycare at private kindergartens  
Please contact the kindergarten
- Daycare at city kindergartens  
Supervisory Department, School Education Division,  
Nagoya City Educational Committee Bureau  
TEL 972-3234

### General questions regarding Nagoya City's child care policies

- Child Care Planning Department, Nagoya City Children and Youth Bureau  
TEL 972-2524

Regarding child care for sick and recovering children,  
please contact the individual daycare for sick and recovering children.

Questions regarding this leaflet  
 Child Care Planning Department,  
 Nagoya City Children and Youth Bureau 3-1-1 Sannomaru, Nagoya City, Aichi-ken, 460-8508